

Fluorspar 2008 / 15. – 17. October 2008



Synthetic anhydrite

an added value concept for producers of
hydrofluoric acid and aluminium fluoride

KNOPP ENGINEERING GmbH
Paul-Eber-Str.16/18
97318 Kitzingen
Tel. +49 9321 13094-60
Fax +49 9321 13094-89
info@knopp-engineering.eu
www.knopp-engineering.eu

1. Knopp Engineering – field of activities

a) Basic- / Detailengineering

b) Staff training

c) Consulting

- Laboratory equipment
- Formula creation
- Quality control
- Job site preparation
- Product processing
- Product launch into new or old markets



KNOPP ENGINEERING GmbH
Paul-Eber-Str.16/18
97318 Kitzingen
Tel. +49 9321 13094-60
Fax +49 9321 13094-89
info@knopp-engineering.eu
www.knopp-engineering.eu

2. Environmental notion / anhydrite disposal / added value

a) Storage in the sense of e.g.:

- as a rock
- put it into the sea
- put it into swamps etc.



b) Disposal site



KNOPP ENGINEERING GmbH
Paul-Eber-Str.16/18
97318 Kitzingen
Tel. +49 9321 13094-60
Fax +49 9321 13094-89
info@knopp-engineering.eu
www.knopp-engineering.eu

2. Environmental notion / anhydrite disposal / added value

c) Anhydrite usage for the building industry



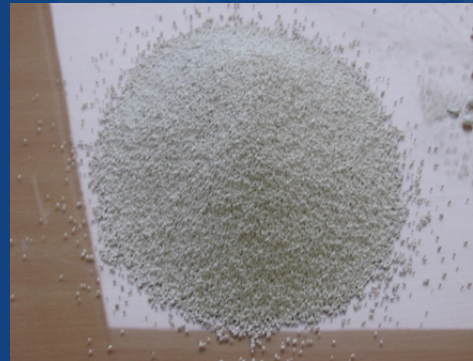
KNOPP ENGINEERING GmbH
Paul-Eber-Str.16/18
97318 Kitzingen
Tel. +49 9321 13094-60
Fax +49 9321 13094-89
info@knopp-engineering.eu
www.knopp-engineering.eu

3. Added value conception

a) Raw Anhydrite



Fine Anhydrite



b) Fine Anhydrite



Anhydrite binder



KNOPP ENGINEERING GmbH
Paul-Eber-Str.16/18
97318 Kitzingen
Tel. +49 9321 13094-60
Fax +49 9321 13094-89
info@knopp-engineering.eu
www.knopp-engineering.eu

3. Added value conception

c) Just in time production



Store production



KNOPP ENGINEERING GmbH
Paul-Eber-Str.16/18
97318 Kitzingen
Tel. +49 9321 13094-60
Fax +49 9321 13094-89
info@knopp-engineering.eu
www.knopp-engineering.eu

3. Added value conception

d) Analyse and documentation / I

- Grain size allocation



- HÄGERMANN consistence control



KNOPP ENGINEERING GmbH
Paul-Eber-Str.16/18
97318 Kitzingen
Tel. +49 9321 13094-60
Fax +49 9321 13094-89
info@knopp-engineering.eu
www.knopp-engineering.eu

| 3. Added value conception

d) Analyse and documentation / II

- Hardening control



- Compressive flexure control



KNOPP ENGINEERING GmbH
Paul-Eber-Str.16/18
97318 Kitzingen
Tel. +49 9321 13094-60
Fax +49 9321 13094-89
info@knopp-engineering.eu
www.knopp-engineering.eu

3. Added value conception

e) Application flowing screed / I

- Formula creation
- Mixing plant as a technical precondition



- Job site preparation



KNOPP ENGINEERING GmbH
Paul-Eber-Str.16/18
97318 Kitzingen
Tel. +49 9321 13094-60
Fax +49 9321 13094-89
info@knopp-engineering.eu
www.knopp-engineering.eu

3. Added value conception

- e) Application flowing screed / II
- Flowing screed assembly

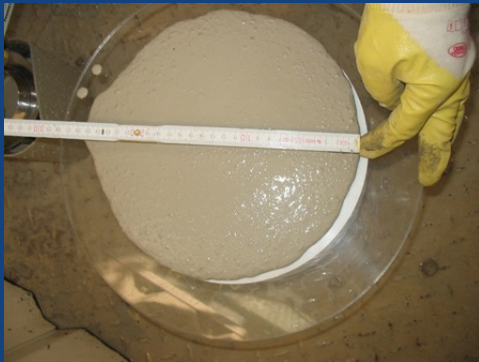


KNOPP ENGINEERING GmbH
Paul-Eber-Str.16/18
97318 Kitzingen
Tel. +49 9321 13094-60
Fax +49 9321 13094-89
info@knopp-engineering.eu
www.knopp-engineering.eu

4. Formulation: SLS – AZO / traditional screed

a) Different System's:

- SLS - AZO



- traditional screed



KNOPP ENGINEERING GmbH
Paul-Eber-Str.16/18
97318 Kitzingen
Tel. +49 9321 13094-60
Fax +49 9321 13094-89
info@knopp-engineering.eu
www.knopp-engineering.eu

b) Support from the Knopp Engineering

5. Job site preparation / requirements

a) Job site preparation I

- Floating screed



KNOPP ENGINEERING GmbH
Paul-Eber-Str.16/18
97318 Kitzingen
Tel. +49 9321 13094-60
Fax +49 9321 13094-89
info@knopp-engineering.eu
www.knopp-engineering.eu

5. Job site preparation / requirements

a) Job site preparation II

- Bonding screed



KNOPP ENGINEERING GmbH
Paul-Eber-Str.16/18
97318 Kitzingen
Tel. +49 9321 13094-60
Fax +49 9321 13094-89
info@knopp-engineering.eu
www.knopp-engineering.eu

5. Job site preparation / requirements

b) Requirements

- Temperatures
- Doors and windows must be installed
- Floating screed without any contact to the underground



KNOPP ENGINEERING GmbH
Paul-Eber-Str.16/18
97318 Kitzingen
Tel. +49 9321 13094-60
Fax +49 9321 13094-89
info@knopp-engineering.eu
www.knopp-engineering.eu

6. Application SLS – AZO and traditional screed

a) Temperature / humidity



b) Practise sample



KNOPP ENGINEERING GmbH
Paul-Eber-Str.16/18
97318 Kitzingen
Tel. +49 9321 13094-60
Fax +49 9321 13094-89
info@knopp-engineering.eu
www.knopp-engineering.eu

6. Application SLS – AZO and traditional screed

c) Testing at the laboratory



KNOPP ENGINEERING GmbH
Paul-Eber-Str.16/18
97318 Kitzingen
Tel. +49 9321 13094-60
Fax +49 9321 13094-89
info@knopp-engineering.eu
www.knopp-engineering.eu

7. Turnover possibilities

a) Cement price

b) Placing new products into the market



KNOPP ENGINEERING GmbH
Paul-Eber-Str.16/18
97318 Kitzingen
Tel. +49 9321 13094-60
Fax +49 9321 13094-89
info@knopp-engineering.eu
www.knopp-engineering.eu

| 8. Prospect into the future

a) Insolation panels



b) Precast systems based of anhydrite binder



KNOPP ENGINEERING GmbH
Paul-Eber-Str.16/18
97318 Kitzingen
Tel. +49 9321 13094-60
Fax +49 9321 13094-89
info@knopp-engineering.eu
www.knopp-engineering.eu

| 8. Prospect into the future

c) Fair face screed



d) Water conservation systems



KNOPP ENGINEERING GmbH
Paul-Eber-Str.16/18
97318 Kitzingen
Tel. +49 9321 13094-60
Fax +49 9321 13094-89
info@knopp-engineering.eu
www.knopp-engineering.eu

8. Prospect into the future

e) Usage of the concrete industry equipment



f) Using of the screed layers equipment



KNOPP ENGINEERING GmbH
Paul-Eber-Str.16/18
97318 Kitzingen
Tel. +49 9321 13094-60
Fax +49 9321 13094-89
info@knopp-engineering.eu
www.knopp-engineering.eu

Thank you very much
for your

ATTENTION

At the reception you will get an assembly about
the contents of the presentation!

Fluorspar 2008 / 15. – 17. October 2008



KNOPP ENGINEERING GmbH
Paul-Eber-Str.16/18
97318 Kitzingen
Tel. +49 9321 13094-60
Fax +49 9321 13094-89
info@knopp-engineering.eu
www.knopp-engineering.eu